

Fastest-growing private 100

Ranked by percentage of growth 2005-2007

Rank	Rank last year	Company	Phone Web site	Percentage of growth	Revenue 2007 Revenue 2006 Revenue 2005	Employees 2007 Employees 2006 Employees 2005	Products/service	Top Executives Title
1	NR	Audigy Group LLC 11201 N.E. Ninth St., Suite 300 Vancouver, Wash. 98684	360-903-0068 audigypro.com	730.35%	\$4,941,901 \$2,458,000 \$595,161	17 9 3	Management consulting for audiologists	Brandon Dawson managing member/CEO
2	NR	Smarsh Inc. 921 S.W. Washington St., Suite 540 Portland, Ore. 97205	866-762-7741 smarsh.com	330.71%	\$3,717,000 \$1,990,000 \$863,000	20 9 5	E-mail archiving and compliance	Stephen Marsh CEO
3	NR	HemCon Medical Technologies 10575 S.W. Cascade Ave., Suite 130 Portland, Ore. 97223	503-245-0459 hemcon.com	269.79%	\$38,440,061 \$23,630,297 \$10,395,171	112 86 53	Medical device manufacturer	John Morgan president/CEO
4	NR	SawStop LLC 9564 S.W. Tualatin Road Tualatin, Ore. 97062	503-570-3300 sawstop.com	263.35%	\$15,598,259 \$11,000,000 \$4,292,915	28 23 12	Table saw manufacturer	Stephen Gass president
5	2	InsightsNow Inc. 1600 S.W. Western Blvd., Suite 350 Corvallis, Ore. 97333	541-757-1404 insightsnow.com	238.09%	\$8,133,903 \$5,256,808 \$2,405,838	26 19 9	Full-service marketing research	David Lundahl president/CEO
6	NR	BrassMedia Inc. 999 N.W. Circle Blvd. Corvallis, Ore. 97330	541-753-8546 brassmedia.com	230.17%	\$2,746,499 \$1,953,326 \$831,856	33 19 11	Media and technology company helping young adults understand money	Bryan Sims, CEO/ founder; Steve Sims, COO/Co-founder
7	NR	CRU DataPort 1000 S.E. Tech Center Drive, Suite 160 Vancouver, Wash. 98683	360-816-1800 cru-dataport.com	218.49%	\$23,568,000 \$9,549,000 \$7,400,000	61 33 24	Removable and external computer hard drive enclosures and systems used for data security and mobility	Randal Barber president/CEO
8	36	iesolutions 5440 S.W. Westgate Drive, Suite 225 Portland, Ore. 97221	503-452-0723 ie4solutions.com	218.15%	\$5,718,272 \$4,200,000 \$1,797,328	40 35 8	IT staffing and consulting	Joe Prats, Tom Coleman managing partners
9	20	Jive Software 317 S.W. Alder St., Suite 500 Portland, Ore. 97204	503-295-3700 jivesoftware.com	216.39%	\$10,628,341 \$4,738,641 \$3,359,246	98 33 15	Clearspace, Clearspace community	Dave Hersh CEO
10	NR	Anvil Media 2189 N.W. Wilson St. Portland, Ore. 97210	503-595-6050 anvilmediainc.com	214.81%	\$1,700,000 \$982,307 \$540,000	9 9 6	Search engine marketing services firm	Kent Lewis president
11	58	Integra Telecom 1201 N.E. Lloyd Blvd., Suite 500 Portland, Ore. 97232	503-453-8000 integratelecom.com	204.53%	\$470,395,000 \$244,301,000 \$154,467,000	2,300 1,100 650	Telecom and Internet solutions for business	Dudley Slater CEO
12	13	Centerstance 10200 S.W. Greenburg Road, Suite 340 Portland, Ore. 97223	503-802-4000 centerstance.com	204.44%	\$10,908,000 \$3,583,000	70 50 22	Business technology consulting	Arne Kainu president
13	NR	Ruby Receptionists 734 N.W. 14th Ave., Suite B Portland, Ore. 97209	503-445-6900 callruby.com	203.38%	\$1,796,000 \$1,258,546 \$592,000	34 24 16	Remote receptionist service	Jill Nelson CEO
14	18	Acme Business Consulting 1233 N.W. 12th Ave., Suite 101 Portland, Ore. 97209	503-232-1416 acmebusinessconsulting.com	182.17%	\$4,131,000 \$3,032,000 \$1,464,000	18 18 11	Project management consulting	Scott Demorest principal
15	NR	52 Limited Inc. 514 N.W. 11th Ave., Suite 209 Portland, Ore. 97209	503-517-0052 52ltd.com	171.95%	\$1,761,697 \$1,238,265 \$647,803	6 4 3	Full-service staffing and recruiting company, specializes in the advertising, design and marketing communications	Brooks Gilley, Steve Potestio managing directors
16	37	Xplane Corp. 926 N.W. 13th Ave., Suite 220 Portland, Ore. 97209	503-224-5228 xplane.com	171.52%	\$4,798,911 \$3,200,000 \$1,767,401	53 26 18	Consulting and information design	Aric Wood CEO
17	NR	Global Business Center 5721 S.E. Columbia Way, Suite 190 Vancouver, Wash. 98661	503-416-7820 gbcblue.com	166.38%	\$3,652,335 \$291,078 \$1,371,076	16 13 13	Sell, install, monitor and maintain guest use computing systems in hotels and other public facilities	Victor Alikin CEO
18	7	Tri-Star Search 6960 S.W. Varns St. Tigard, Ore. 97223	503-802-6000 tristarsearch.com	164.51%	\$3,100,000 \$2,750,000 \$1,172,000	15 15 5	Executive level recruiting (retained and contingency) and staffing services	Rudi Bellinazzo president/CEO
19	24	Isite Design 115 N.W. First Ave, Suite 500 Portland, Ore. 97209	503-221-9860 isitedesign.com	164.17%	\$4,766,093 \$3,456,428 \$1,804,192	42 35 15	Interactive Web site design and development	Paul Williams president
20	8	Ethicspoint 13221 S.W. 68th Parkway, Suite 120 Portland, Ore. 97223	971-250-4100 ethicspoint.com	163.29%	\$9,353,912 \$5,941,986 \$3,552,757	85 76 58	Integrated issue and event management for governance, risk and compliance market	David Childers president/CEO
21	70	PCD Group 1400 N.W. Irving St., Suite 104 Portland, Ore. 97209	503-525-2989 pcdgroup.com	156.99%	\$2,212,917 \$1,383,015 \$861,106	8 7 4	Web marketing and application design for the financial service industry	Paulette Carter CEO
22	NR	Babcock & Jenkins Inc. 711 S.W. Alder St., Suite 200 Portland, Ore. 97205	503-382-8500 bnj.com	153.06%	\$12,400,000 \$6,800,000 \$4,900,000	42 35 29	Direct and relationship marketing	Denise Barnes president
23	NR	Jibe Consulting Inc. 2828 S.W. Corbett, Suite 111 Portland, Ore. 97201	503-274-0788 jibeconsulting.com	147.71%	\$10,718,984 \$8,500,000 \$4,327,260	68 48 32	Management and technology consulting	Shane Moncrieff president
24	NR	Ash Creek Associates Inc. 9615 S.W. Allen Blvd., Suite 106 Beaverton, Ore. 97005	503-924-4704 ashcreekassociates.com	140.00%	\$3,600,000 \$3,200,000 \$1,500,000	17 15 11	Environmental engineering and geotechnical consulting	Amanda Spencer president/principal hydrogeologist
25	NR	Home Certified Inc. 19363 Willamette Drive, Suite 174 West Linn, Ore. 97208	866-379-4674 homecertified.com	136.08%	\$2,027,000 \$1,428,600 \$858,600	17 13 8	Moisture testing, drying and temporary heat	Kelly Stelk president



Stephen Marsh, CEO of Smarsh Inc.

COMPANIES WITH LARGEST REVENUE Ranked by revenue, 2007

1. **INTEGRA TELECOM** \$470M
2. **BANFIELD THE PET HOSPITAL** \$400M
3. **R2C GROUP** \$336M
4. **MTI-ANDREWS** \$58M
5. **R. F. STEARNS** \$55M
6. **ANTARES ADVANCED TEST TECHNOLOGIES** \$53M
7. **PACIFIC STAR COMMUNICATIONS** \$52M
8. **TRIPWIRE INC.** \$49M
9. **PAPA MURPHY'S INTERNATIONAL** \$48M
10. **COMPVIEW INC.** \$44M

Source: Portland Business Journal

- NA Not available
- NR Not ranked
- WND Would not disclose
- * Tie

Circled items indicate Lighthouse Award winners—those companies on the list for a fifth consecutive year.

Numbers in squares indicate past Lighthouse Award winners.

Research by Tam Jenkins Audited by Perkins & Co. Source: a representative of each firm

While every attempt is made to ensure the thoroughness and accuracy of the list, omissions and errors may occur. Please send corrections or additions on company letterhead to Tam Jenkins, 851 S.W. Sixth Ave., Suite 500, Portland, Ore. 97204.

Fastest-growing private 100

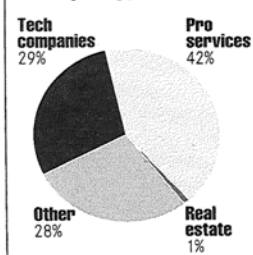
Ranked by percentage of growth 2005-2007

Rank	Rank last year	Company	Phone Web site	Percentage of growth	Revenue 2007 Revenue 2006 Revenue 2005	Employees 2007 Employees 2006 Employees 2005	Products/service	Top Executives Title
26	NR	Intex Custom Homes 6700 S.W. 105th, Suite 216 Beaverton, Ore. 97008	503-452-3780 intexcustomhomes.com	132.96%	\$12,958,692 \$4,887,323 \$5,562,607	4 4 4	Home builder	Joseph Bauschelt president
27	NR	ImTech Inc. P.O. Box 1460 Corvallis, Ore. 97339	541-757-2047 imtech-or.com	130.33%	\$2,037,095 \$1,737,681 \$884,434	19 18 13	Inkjet technology engineering and products	William Buskirk president
28	NR	Evergreen Engineering 7431 N.W. Evergreen Parkway, Suite 210 Hillsboro, Ore. 97124	503-439-8777 evergreenengineering.com	128.28%	\$22,600,000 \$12,000,000 \$9,900,000	130 70 60	Engineering and construction services	Todd Alsdorf, Steve Cruft principals
29	12	Northwest Technologies Inc. 1150 N.W. Park Ave. Estacada, Ore. 97023	503-630-2030 nw-technologies.com	127.40%	\$7,521,862 \$6,074,837 \$3,307,800	34 30 19	Laser cutting, steel fabrication and manufacturing	Eric Sale president
30	38	Antares Advanced Test Technologies 1499 S.E. Tech Center Place, Suite 140 Vancouver, Wash. 98683	360-433-6230 antares-att.com	125.98%	\$52,517,477 \$34,975,260 \$23,239,540	433 400 100	Semiconductor test consumables	Matt Bergeron president/CEO
31	64	Percipio Consulting Group Inc. 2240 N. Interstate Portland, Ore. 97202	503-281-4255 percipiogroup.com	123.56%	\$4,758,021 \$2,382,000 \$2,128,320	23 23 14	A provider of operational improvement, risk management and business technology integration consulting	Tim Bergler principal
32	31	Columbia Community Bank 314 E. Main St. Hillsboro, Ore. 97123	503-693-7500 columbiacommunitybank.com	116.80%	\$26,402,328 \$19,427,000 \$12,178,426	47 44 37	Business and professional banking	Rick Roby president/CEO
33	NR	In Line Commercial Construction 18880 S.W. Shaw St. Aloha, Ore. 97006	503-642-4117 inline-cc.com	115.05%	\$17,056,000 \$14,210,000 \$7,931,000	65 52 40	General contractor	Dave Flint president
34	NR	NLight Corp. 5408 N.E. 88th St., Building E Vancouver, Wash. 98665	360-566-4460 nlight.net	113.04%	\$35,348,000 \$20,558,000 \$16,592,000	309 199 104	High-power semiconductor lasers and fibers for industrial, medical, defense and consumer applications	Scott Keeney president/CEO
35	NR	White Horse 3747 N.E. Sandy Blvd. Portland, Ore. 97232	503-471-4200 whitehorse.com	112.96%	\$7,320,482 \$4,300,000 \$3,437,466	35 35 35	Full-service interactive marketing agency	Jennifer Modarelli principal/owner
36	15	Eroi Inc. 505 N.W. Couch St., Suite 300 Portland, Ore. 97209	503-221-6000 eroi.com	111.08%	\$3,566,132 \$2,871,311 \$1,689,500	43 30 22	Online marketing company	Ryan Buchanan founder/CEO
37	16	Auctionpay Inc. 13221 S.W. 68th Parkway, Suite 460 Portland, Ore. 97223	503-597-0333 auctionpay.com	109.87%	\$12,030,000 \$9,018,000 \$5,732,000	61 58 52	Technology for nonprofits and schools	Steve Sterba CEO
38	96	AKT Services 5665 S.W. Meadows Road, Suite 200 Lake Oswego, Ore. 97035	503-620-4489 aktcpa.com	106.55%	\$27,295,000 \$15,368,000 \$13,215,000	198 101 88	CPA, business, wealth and benefits advisory firm	Stephen Tatone CEO
39	49	Pop Art Inc. 718 S.W. Alder St., Suite 300 Portland, Ore. 97205	503-242-4292 popart.com	106.47%	\$4,112,426 \$3,098,336 \$1,991,804	23 19 15	Interactive solutions (marketing)	Steve Rosenbaum president/CEO
40	NR	Alliance Industrial Group 2420 N. Hayden Island Drive Portland, Ore. 97217	503-285-7100 alliance-industrial.com	101.99%	\$12,469,339 \$9,773,108 \$6,173,093	80 60 30	Steel erector	Lisa Buchan CEO
41	45	R. F. Stearns 1800 Blankenship Road, Suite 325 West Linn, Ore. 97068	503-723-5959 rfstearns.com	100.48%	\$55,101,625 \$44,079,754 \$27,485,129	39 29 24	Specialty steel contractor	Steven Miller president
42	NR	Daddies Board Shop 7126 N.E. Sandy Blvd. Portland, Ore. 97213	503-281-5123 daddiesboardshop.com	99.58%	\$1,614,633 \$979,059 \$808,998	6 3 2	Snowboard/skateboard shop	Melanie Loveland owner
43	17	E-Business International Inc. 4915 S.W. Griffith Drive, Suite 302 Beaverton, Ore. 97005	503-644-2290 e-bi.net	99.58%	\$11,057,623 \$9,333,000 \$5,540,440	131 101 58	Contract manufacturing	George Wang CEO
44	25	VanderHouwen & Associates Inc. 6342 S.W. Macadam Ave. Portland, Ore. 97239	503-299-6811 vanderhouwen.com	94.77%	\$14,279,046 \$13,734,128 \$7,331,332	107 112 80	Technology staffing company	Eric VanderHouwen, president; Kathy VanderHouwen, CEO/owner
45	21	Automated Technical Services Inc. 4522 S.W. Water Ave., Suite 100 Portland, Ore. 97239	503-684-9100 atsigroup.com	93.02%	\$8,071,645 \$7,924,026 \$4,181,683	55 54 32	IT technical staffing	Gary Nashif president/CEO
46	NR	Marquam Group 30 N.W. 10th Ave. Portland, Ore. 97209	503-276-1590 marquamgroup.com	86.46%	\$2,424,000 \$1,500,000 \$1,300,000	22 18 6	IT business consulting	Chad Layman president
47	30	Keen Mobility 6500 N.E. Halsey St., Suite B Portland, Ore. 97213	503-285-9090 keenmobility.com	84.46%	\$2,092,500 \$1,411,375 \$1,134,400	12 13 15	Innovates, designs, manufactures and distributes mattresses, walkers, wheelchairs, canes, crutches and more	Vail Horton CEO
48	NR	Kywa International 5335 Meadows Road, Suite 370 Lake Oswego, Ore. 97035	503-639-0300	82.43%	\$16,467,011 \$10,149,682 \$9,026,511	1 1 1	International trade	Jordan Wick president
49	NR	Professional Publishing Inc. P.O. Box 30327 Portland, Ore. 97294	503-221-1260 propubinc.com	81.98%	\$1,197,491 \$869,491 \$658,043	8 7 5	Trade publications	Will Johnson
50	26	Prem Group 351 N.W. 12th Ave. Portland, Ore. 97209	503-224-1460 premgrp.com	81.55%	\$3,760,000 \$3,066,618 \$2,071,000	63 57 33	Real estate management	Jacob Johnson president



Rick Roby, president/CEO of Columbia Community Bank.

INDUSTRY BREAKDOWN, 2007
Fastest-growing private companies



Source: Portland Business Journal

NA Not available
NR Not ranked
WND Would not disclose
* Tie

○ Circled items indicate Lighthouse Award winners—those companies on the list for a fifth consecutive year.

□ Numbers in squares indicate past Lighthouse Award winners.

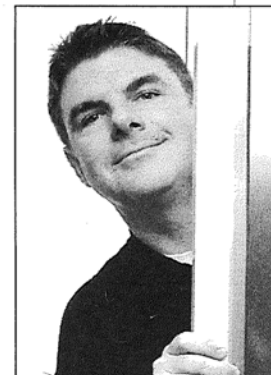
Research by Tam Jenkins
Audited by Perkins & Co.
Source: a representative of each firm

While every attempt is made to ensure the thoroughness and accuracy of the list, omissions and errors may occur. Please send corrections or additions on company letterhead to Tam Jenkins, 851 S.W. Sixth Ave., Suite 500, Portland, Ore. 97204.

Fastest-growing private 100

Ranked by percentage of growth 2005-2007

Rank	Rank last year	Company	Phone Web site	Percentage of growth	Revenue 2007 Revenue 2006 Revenue 2005	Employees 2007 Employees 2006 Employees 2005	Products/service	Top Executives Title
51	48	Bank of Clark County 1400 Washington St., Suite 200 Vancouver, Wash. 98660	360-993-2265 bankofclarkcounty.com	81.39%	\$32,771,799 \$25,458,800 \$18,067,453	79 65 60	Community business bank	Michael Worthy CEO
52	23	Fortis Construction Inc. 1705 S.W. Taylor St., Suite 200 Portland, Ore. 97205	503-459-4477 fortisconstruct.com	80.21%	\$40,472,823 \$37,528,709 \$22,458,565	50 37 30	Commercial construction	Jim Kilpatrick president
53	78	OneCreditSource.com 1800 Blankenship Road, Suite 250 West Linn, Ore. 97068	503-905-2930 onecreditsource.com	78.92%	\$1,665,303 \$1,203,665 \$930,755	8.5 7.5 6.5	Online consumer credit, employment screening other public information	Jason Hess president/CEO
54	74	DHX Advertising 217 N.E. Eighth Ave. Portland, Ore. 97232	503-872-9616 dhxadvc.com	77.03%	\$1,813,862 \$1,208,000 \$1,024,610	9 8 7	Marketing and advertising	Dave DeMots
55	NR	Cook Security Group 5841 S.E. International Way Milwaukie, Ore. 97222	503-786-5173 cooksecuritygroup.com	76.27%	\$7,727,785 \$6,411,391 \$4,384,000	48 44 24	Service and installation of physical and electronic security products, ATMs and other ancillary products	Brian Cook president/CEO
56	NR	Cadence Contract Flooring 4605 N.E. Fremont St., Suite 203 Portland, Ore. 97213	503-408-1248	74.89%	\$2,859,222 \$2,192,519 \$1,634,887	8 5 4	Commercial wholesale flooring distributor	Janet Radel & Carla Stanfill owners
57	43	R2C Group 207 N.W. Park Ave. Portland, Ore. 97209	503-276-4094 r2cgroup.com	74.34%	\$335,600,000 \$244,300,000 \$192,500,000	191 161 82	Full service response-driven advertising	Tim O'Leary CEO
58	40	Sterling Communications Inc. 14945 S.W. Sequoia Parkway, Suite 110 Portland, Ore. 97224	503-968-8908 sterling.net	71.51%	\$3,833,314 \$3,130,000 \$2,234,998	21 17 14	Voice, data, and Internet services provider, managed VoIP phone solution for business	Tom Gillihan president
59	60	Tripwire Inc. 326 S.W. Broadway, third floor Portland, Ore. 97205	503-276-7500 tripwire.com	69.81%	\$49,183,278 \$41,225,131 \$28,964,000	226 172 148	Configuration assessment and auditing software	James Johnson president/CEO
60	NR	Weinmann Painting 4212 N.E. Sumner St. Portland, Ore. 97218	503-235-2989 weinmannpainting.com	69.76%	\$2,796,000 \$2,000,000 \$1,647,000	80 40 25	Painting contractor	Kevin Weinmann owner
61	NR	Springbrook Software 111 S.W. Fifth Ave., Suite 2900 Portland, Ore. 97204	866-256-7661 springbrooksoftware.com	68.89%	\$11,374,231 \$8,104,130 \$6,734,545	102 80 70	Software development and sales for local government, entities nationwide, mainly cities and special districts	Rick Rementeria president
62	50	Vista Capital Partners 9755 S.W. Barnes Road, Suite 595 Portland, Ore. 97225	503-772-9500 vistacp.com	68.52%	\$3,059,300 \$2,383,745 \$1,815,400	9 8 7	Investment council, wealth management	Michael O'Reilly, Douglas Johanson principals
63	66	Fish Marketing One Center Pointe Drive, Suite 190 Lake Oswego, Ore. 97035	503-635-0007 fish-marketing.com	67.10%	\$2,985,309 \$2,616,907 \$1,786,576	9 5 4	Advertising and public relations	Doug Fish president
64	NR	Axiom 9750 S.W. Nimbus Ave. Beaverton, Ore. 97008	503-530-3000 axiumae.com	66.73%	\$6,277,934 \$4,925,910 \$3,765,353	56 51 48	Developing innovative accounting and project management software for the architectural and engineering industry	Alan Mills, Cathy Mills, COO, chief sales/marketing officer
65	86	Montgomery & Graham Inc. 412 Jefferson Parkway, Suite 100 Lake Oswego, Ore. 97035	503-297-1330 mgbenefits.com	64.09%	\$2,961,741 \$2,346,000 \$1,805,000	42 38 28	Employee benefit planning	Eric Graham, Wes Montgomery, Scott Lyda
66	35	Timbercon Inc. 17387 S.W. 63rd Ave. Lake Oswego, Ore. 97035	503-827-8141 timbercon.com	63.09%	\$8,438,026 \$6,661,594 \$5,173,824	70 54 26	Fiber optic products manufacturing company provides an array of connectivity solutions	Eric Meslow CEO
67	69	MTI-Andrews Inc. 1050 N.W. 229th Ave. Hillsboro, Ore. 97124	503-648-6500 mti-interactive.com	62.86%	\$57,610,641 \$35,373,000 \$35,373,280	180 170 150	Merchandising displays and repair parts	Michael Cook
68	83	Papa Murphy's International 8000 N.W. Parkway Drive, Suite 350 Vancouver, Wash. 98685	360-260-7272 papamurphys.com	61.89%	\$48,436,273 \$38,100,000 \$29,919,757	1,039 672 706	Take home pizza	John Barr CEO
69	3	Korvis Automation 2101 Jack London Street Corvallis, Ore. 97333	541-738-4361 korvis.com	60.07%	\$24,320,566 \$23,126,092 \$15,194,005	51 43 33	Industrial automation equipment	Richard Carone CEO
70	33	Icon Time Systems 15201 N.W. Greenbrier Parkway Beaverton, Ore. 97006	503-619-4570 icontime.com	59.93%	\$2,770,000 \$3,338,629 \$1,732,000	12 22 16	Automated time clock systems	Andrew King
71	19	Instantiations Inc. 8101 S.W. Boones Ferry Road, Suite 200 Portland, Ore. 97224	503-598-4911 instantiations.com	59.69%	\$4,128,302 \$4,608,000 \$2,585,263	30 25 20	Software development tools and engineering consulting services for professional software programmers	Mike Taylor president/CEO/ co-founder
72	10	Vigilan Inc. 9375 S.W. Commerce Circle, Suite A-1 Wilsonville, Ore. 97070	503-682-8828 vigilan.com	57.41%	\$2,241,138 \$2,026,640 \$1,423,716	14 16 16	Software services for the elder care market	Chris Mason CEO
73	NR	Home Instead Senior Care 4415 N.W. Sandy Blvd., Suite 208 Portland, Ore. 97213	503-335-0626 homeinstead.com	56.34%	\$1,878,882 \$1,445,518 \$1,201,821	113 146 137	In-home care agency for seniors	Sandra Morales president/owner
74	57	Cooper Zietz Engineers Inc. 421 S.W. Sixth Ave., Suite 1210 Portland, Ore. 97204	503-253-5429 coopercm.com	55.31%	\$3,960,407 \$3,850,000 \$2,550,000	37 35 24	Engineering, construction inspection, environmental consulting	Fred Cooper
75	51	Promopeddler Inc. 20015 S.W. Pacific Highway, Suite 300 Sherwood, Ore. 97140	503-783-1480 promopeddler.com	53.65%	\$9,543,023 \$7,588,000 \$6,210,926	33 32 35	Promotional products	Lewis Amicone, Monte Baumgartner
76	NR	Roth Heating and Cooling P.O. Box 1265 Canby, Ore. 97013	503-266-1249 roth-heat.com	53.50%	\$19,732,977 \$17,633,426 \$12,855,154	160 147 109	Residential and commercial heating and cooling	Kory MacGregor president



Tim O'Leary, CEO of R2C Group.

COMPANIES WITH MOST EMPLOYEES

Ranked by most employees, 2007

- BANFIELD THE PET HOSPITAL** 5,994
- INTEGRA TELECOM** 2,300
- PAPA MURPHY'S INTERNATIONAL** 1,039
- ANTARES ADVANCED TEST TECHNOLOGIES** 433
- NLIGHT CORP.** 309
- TRIPWIRE INC.** 226
- AKT SERVICES** 198
- R2C GROUP** 191
- PASTINI PASTARIA RESTAURANTS** 190
- ASSOCIATED BUSINESS SYSTEMS** 186

Source: Portland Business Journal

- NA Not available
NR Not ranked
WND Would not disclose
* Tie

Circled items indicate Lighthouse Award winners—those companies on the list for a fifth consecutive year.

Numbers in squares indicate past Lighthouse Award winners.

Research by Tam Jenkins
Audited by Perkins & Co.
Source: a representative of each firm

While every attempt is made to ensure the thoroughness and accuracy of the list, omissions and errors may occur. Please send corrections or additions on company letterhead to Tam Jenkins, 851 S.W. Sixth Ave., Suite 500, Portland, Ore. 97204.

Fastest-growing private 100

Ranked by percentage of growth 2005-2007

Rank	Rank last year	Company	Phone Web site	Percentage of growth	Revenue 2007 Revenue 2006 Revenue 2005	Employees 2007 Employees 2006 Employees 2005	Products/service	Top Executives Title
77	53	Action Employment Services Inc. 121 S.W. Morrison St., Suite 950 Portland, Ore. 97204	503-275-9011 actionemployment.net	52.65%	\$1,768,711 \$1,635,000 \$1,158,674	8 5 5	Staffing service	Marianne Moore president
78	NR	Alpine Mortgage Planning Six Centerpointe Drive, Suite 300 Lake Oswego, Ore. 97035	503-699-6444 alpinemc.com	52.65%	\$7,810,385 \$5,457,246 \$5,116,586	84 43 46	Mortgage banking	Patrick Palmer president/CEO
79	81	DocuSource Print Management 6955 S.W. Sandburg St. Tigard, Ore. 97223	503-906-4051 docu-source.com	52.63%	\$13,343,645 \$10,918,967 \$8,742,609	41 39 34	Full service print management and fulfillment company	Jeff Scott president
80	61	Opus Creative Group 2337 N.W. York Street, Suite 206 Portland, Ore. 97210	503-220-0252 opuscreative.com	52.44%	\$8,780,907 \$7,642,682 \$5,760,153	64 59 48	Marketing, creative services, and Web hosting	Nick Olson president
81	NR	Co-Operations Inc. 20049 S.W.112th Ave. Tualatin, Ore. 97062	503-620-7977 co-operations.com	51.65%	\$5,860,917 \$4,480,000 \$3,864,822	33 30 20	Fulfillment, eCommerce, as- sembly, packaging, warehousing, call center	Patricia Granum president/CEO
82	NR	Pastini Pastaria Restaurants 9700 S.W. Capitol Highway, Suite 260 Portland, Ore. 97219	503-595-1361 pastini.net	51.25%	\$7,598,190 \$6,062,772 \$5,023,615	190 113 118	Full service, casual dining Italian restaurants with six locations throughout Portland metro	Kara Oringdolph-Hale, chairman of the board; Craig Bashe, president
83	NR	Banfield The Pet Hospital 8000 N.E. Tillamook St. Portland, Ore. 97213	503-922-5000 banfield.net	48.15%	\$400,000,000 \$335,000,000 \$270,000,000	5,994 5,197	Veterinary services	John Payne CEO/COO
84	NR	Twenty Four Seven 425 N.E. Ninth Ave. Portland, Ore. 97232	503-222-7999 twentyfour7.com	47.35%	\$8,707,000 \$5,855,000 \$5,909,000	68 35 41	Multidisciplinary design firm	Mimi Lettunich president/partner
85	NR	AFMS Inc. 10260 S.W. Greenburg Road Portland, Ore. 97223	503-781-9082 afms.com	45.48%	\$19,494,791 \$9,051,122 \$13,400,580	26 24 23	Business/logistics cost reduction supply chain consulting	Mike Erickson CEO/founder
86	91	Pacific Landscape Management 21555 N.W. Amberwood Drive Hillsboro, Ore. 97124	503-648-3900 pacscape.com	44.67%	\$5,218,674 \$4,379,245 \$3,607,400	80 70 60	Landscape contractor	Bob Grover
87	NR	The Management Group Inc. 7710 N.E. Vancouver Mall Drive Vancouver, Wash. 98662	360-892-4000 tmgnortheast.com	44.37%	\$4,050,300 \$3,516,900 \$2,805,500	86 96 83	Property management	Carmen Villarma president
88	NR	Academic Network LLC 120 N.W. Ninth Ave, Suite 216 Portland, Ore. 97209	503-228-3217 academicnetwork.com	44.20%	\$3,986,506 \$2,290,301 \$2,764,530	65 15 12	Medical and health communica- tions	Kathleen McCarron CEO
89	NR	The Ulum Group 941 Oak Street Eugene, Ore. 97401	541-302-6620 ulum.com	43.92%	\$1,745,225 \$1,502,832 \$1,212,642	16 17 13	Public relations, public affairs	Patrick Walsh president/CEO
90	NR	Climax Portable Machine Tools 2712 E. Second St. Newberg, Ore. 97132	503-538-2185 cpmt.com	43.18%	\$22,923,656 \$20,365,657 \$16,010,338	117 90 88	Precision portable machine tools, engineering consulting and training	Geoff Gilmore president/CEO
91	46	Cherokee General Corp. 101 Kaylo Ridge Road Washougal, Wash. 98671	503-661-1113 cherokeegeneral.com	41.91%	\$15,821,552 \$14,600,000 \$11,148,968	45 45 35	General contractor	Rhonda Herschell
92	NR	Pacific Star Communications 15055 S.W. Sequoia Parkway, Suite 100 Portland, Ore. 97224	503-403-3000 pacstar.com	40.47%	\$52,068,238 \$45,893,983 \$37,066,537	92 76 39	Technology-based systems integrator providing total communications solutions for federal, state and local government	Robert Frisbee CEO
93	41	Synergy Business Solutions Inc. 16250 S.W. Upper Boones Ferry Road Portland, Ore. 97224	503-601-4100 synergybusiness.com	39.01%	\$4,045,728 \$4,057,364 \$2,910,283	21 19 16	Microsoft Business Solutions Inc.	Stephen Toth president
94	NR	EasyStreet Online Services 9705 S.W. Sunshine Court Beaverton, Ore. 97005	503-646-8400 easystreet.com	38.70%	\$6,957,850 \$5,600,000 \$5,016,606	40 40 40	Managed IT services provider	Rich Bader president/CEO
*	76	Micro Power Electronics Inc. 13955 S.W. Millikan Way Beaverton, Ore. 97005	503-695-7600 micro-power.com	38.70%	\$57,799,000 \$47,384,000 \$41,202,000	245 171 199	Manufacturer of battery packs, chargers, docking stations and power supply systems	Greg Love CEO
95	99	Resource Staffing Services 10568 S.E. Washington St. Portland, Ore. 97216	503-261-8822 resourcestaffingservices.com	37.90%	\$4,063,000 \$3,511,625 \$2,946,443	7.5 7.5 6	Staffing and recruiting services	Jennifer Wall president/owner
96	NR	Vernier Software 13979 S.W. Millikan Way Beaverton, Ore. 97005	888-837-6437 vernier.com	36.88%	\$36,000,000 \$30,400,000 \$26,300,000	72 70 70	Educational scientific hardware and software	David Vernier CEO
97	71	Associated Business Systems 7440 S.W. Bonita Road Portland, Ore. 97224	503-244-4800 associatedbusiness.com	35.49%	\$41,844,643 \$39,223,117 \$30,883,916	186 168 135	Office equipment, supplies & service	Craig Knouf president/CEO
98	NR	CompView 10035 S.W. Artic Drive Beaverton, Ore. 97005	503-641-8439 compview.com	34.05%	\$43,900,000 \$37,800,000 \$32,750,000	110 97 89	Audiovisual system integration services and products	Scott Birdsall president/CEO
99	75	Ornelas Enterprises Inc. 7395 N.W. Evergreen Parkway, Suite 150 Hillsboro, Ore. 97124	503-844-9000 oeiassembly.com	33.34%	\$4,830,113 \$5,485,653 \$3,622,478	31 34 31	Contract electronic manufactur- ing and assembly	Tino Ornelas CEO
100	88	Portland Roasting Holdings 340 S.E. Seventh Ave. Portland, Ore. 97214	503-236-7378 portlandroasting.com	30.04%	\$5,109,472 \$4,771,491 \$3,929,143	27 25 22	Specialty coffee roaster, wholesaler, distributor of allied products for the coffee industry	Mark Stell managing partner
*	14	Plastic-Metal Technologies Inc. 7051 S.W. Sandburg St., Suite 400 Tigard, Ore. 97223	503-684-0725 p-mtinc.com	30.04%	\$1,980,887 \$2,025,232 \$1,523,285	35 24 15	Value added EMI/ESD shielding for portable electronic instru- ments	Richard Allen president



Rhonda Herschell of Cherokee General Corp.

COMPANIES WITH BIGGEST EMPLOYEE GROWTH
Ranked by employee growth, 2007

- JIVE SOFTWARE** ... 553%
- AUDIGY GROUP LLC** 467%
- ACADEMIC NETWORK LLC** ... 442%
- IESOLUTIONS** ... 400%
- ANTARES ADVANCED TEST TECHNOLOGIES** 333%
- SMARSH INC.** ... 300%
- MARQUAM GROUP** ... 287%
- INTEGRA TELECOM** ... 254%
- WEINMANN PAINTING INC.** ... 220%
- CENTERSTANCE** ... 218%

Source: Portland Business Journal

NA Not available
NR Not ranked
WND Would not disclose
* Tie

○ Circled items indicate Lighthouse Award winners—those companies on the list for a fifth consecutive year.

□ Numbers in squares indicate past Lighthouse Award winners.

Research by Tam Jenkins
Audited by Perkins & Co.
Source: a representative of each firm

While every attempt is made to ensure the thoroughness and accuracy of the list, omissions and errors may occur. Please send corrections or additions on company letterhead to Tam Jenkins, 851 S.W. Sixth Ave., Suite 500, Portland, Ore. 97204.